



C N P O L L O

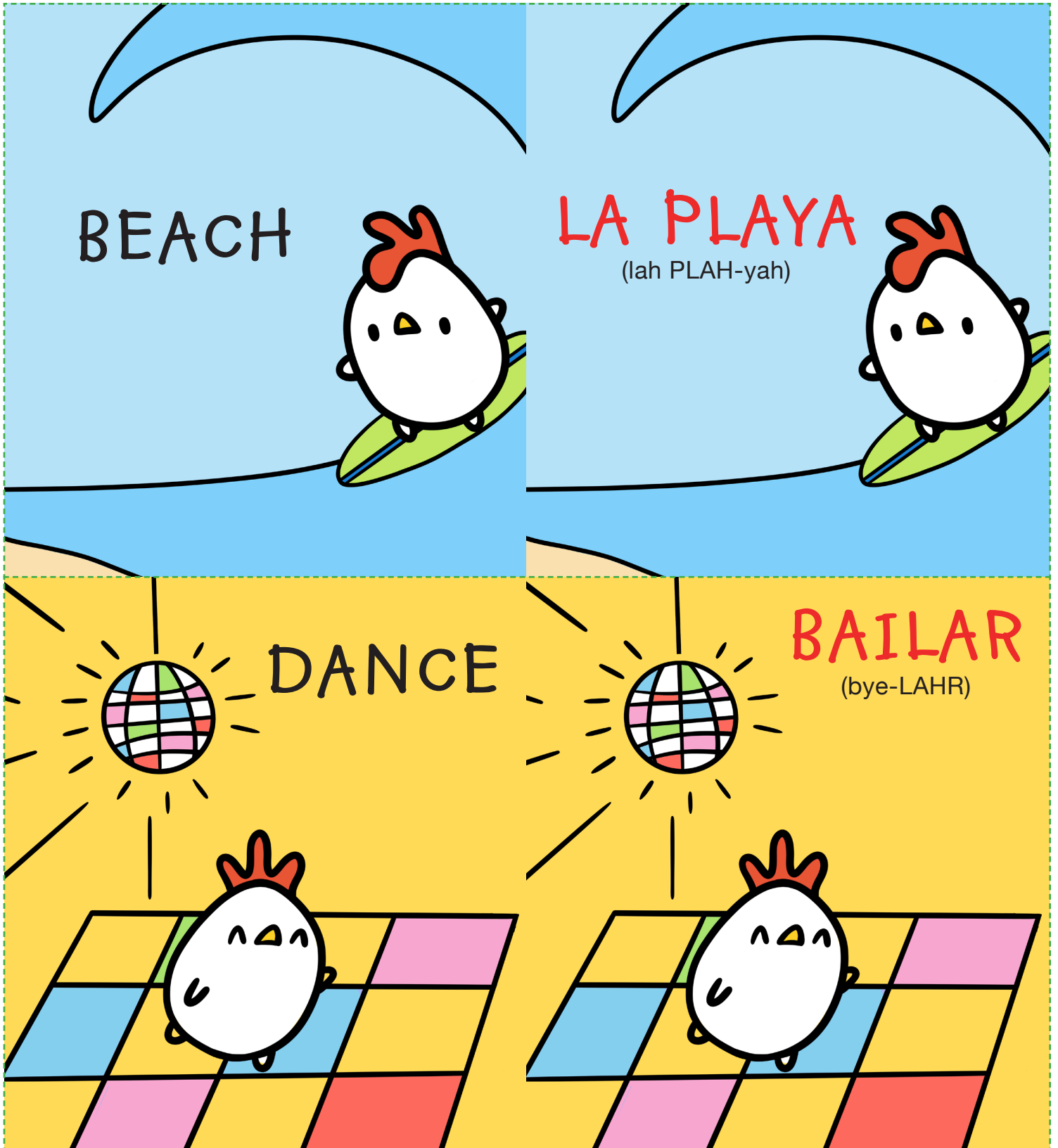
A Bilingual Playtime Adventure



THIS KIT INCLUDES
bilingual flash cards, a matching game,
and coloring pages.

ENGLISH TO SPANISH FLASH CARDS

With an adult's help, cut along the dotted line and fold the flash card in half so one side is English and the other side is Spanish.



ENGLISH TO SPANISH FLASH CARDS

With an adult's help, cut along the dotted line and fold the flash card in half so one side is English and the other side is Spanish.



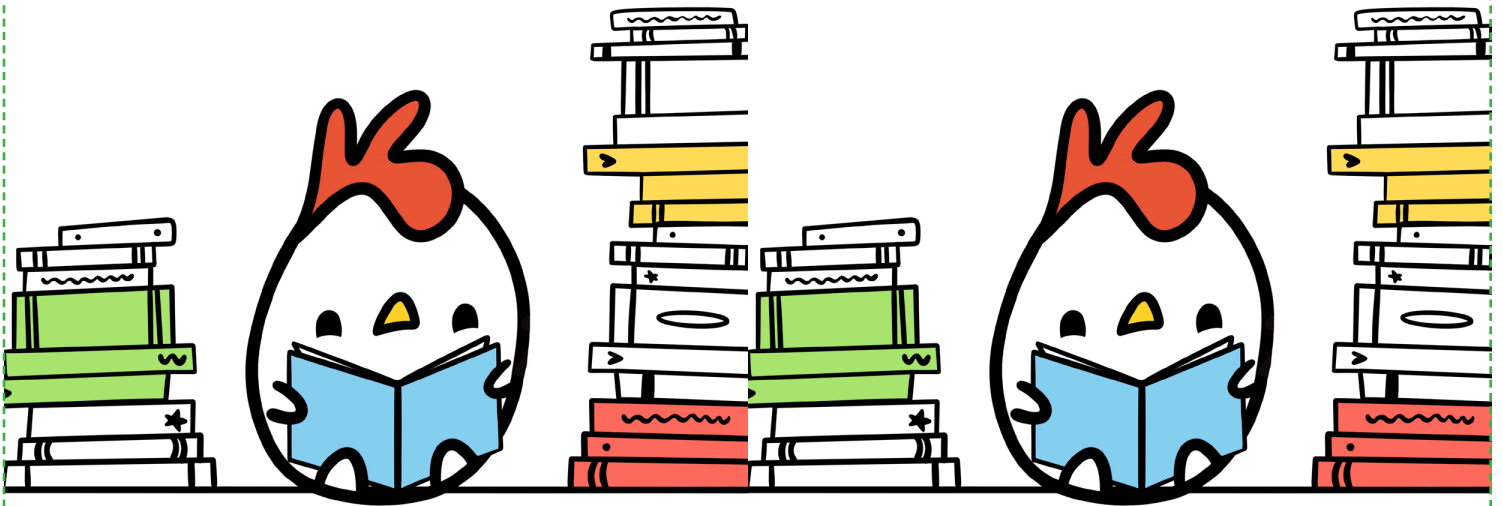
ENGLISH TO SPANISH FLASH CARDS

With an adult's help, cut along the dotted line and fold the flash card in half so one side is English and the other side is Spanish.

LIBRARY

LA BIBLIOTECA

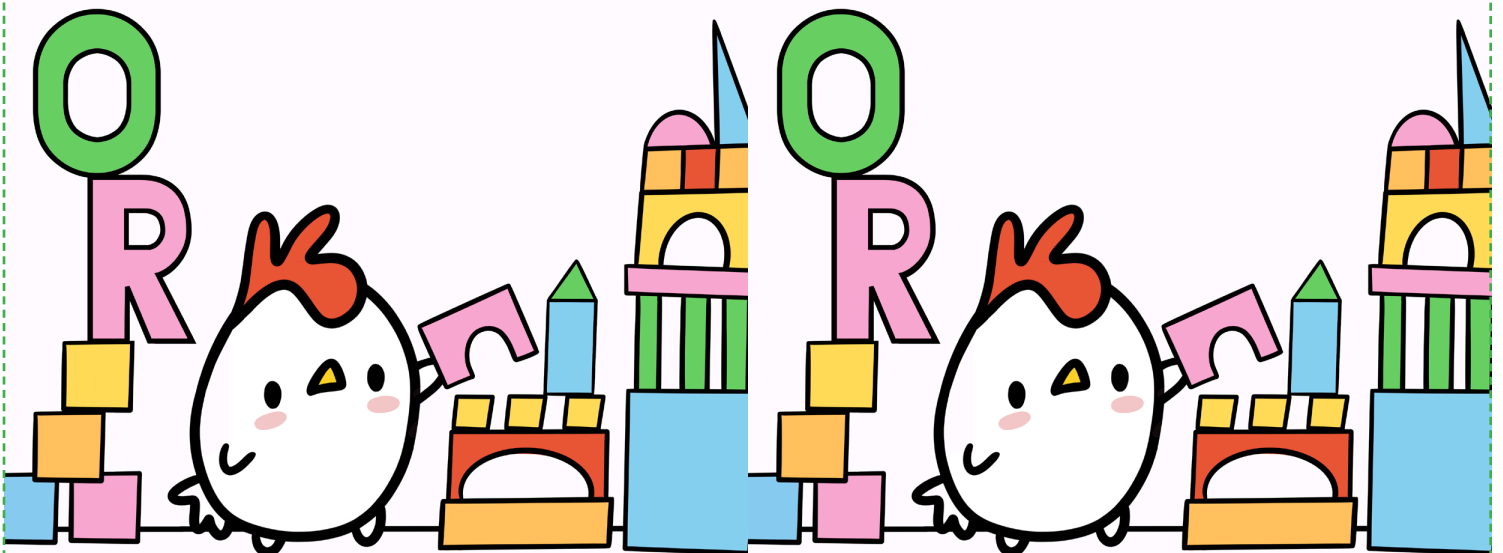
(lah BEE-blee-oh-TEH-kah)



BUILD

CONSTRUIR

(kohn-stroo-EER)



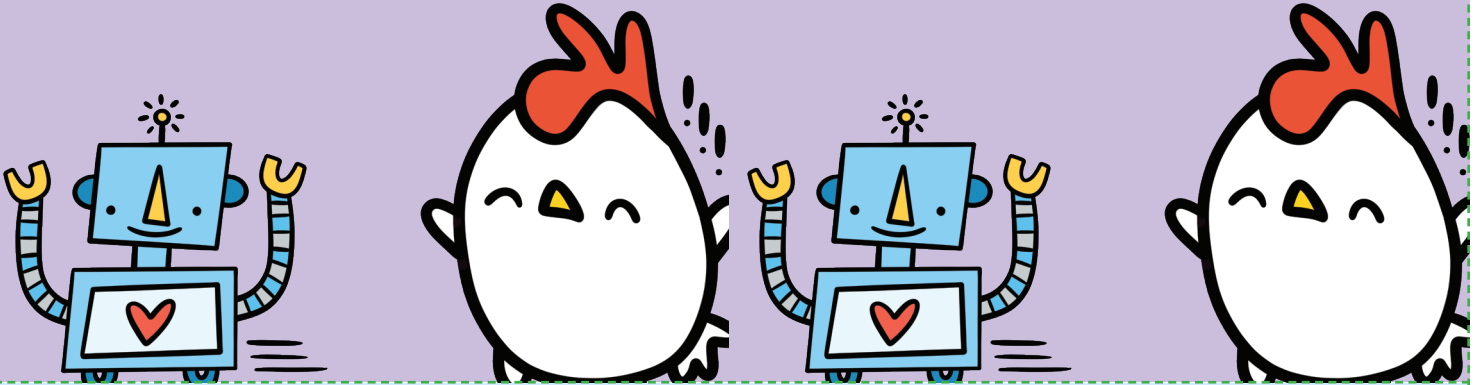
ENGLISH TO SPANISH FLASH CARDS

With an adult's help, cut along the dotted line and fold the flash card in half so one side is English and the other side is Spanish.

STORE

LA TIENDA

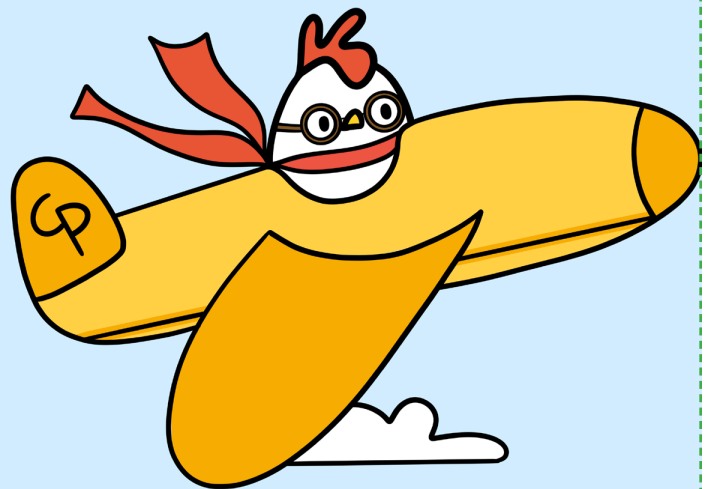
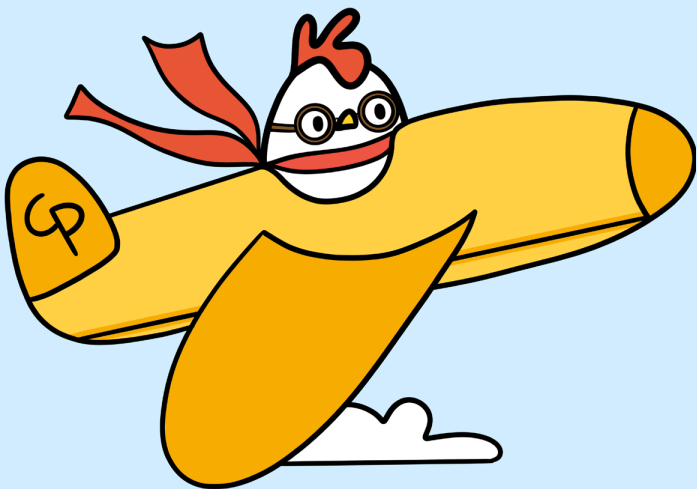
(lah tee-YEN-dah)



FLY

VOLAR

(boh-LAHR)

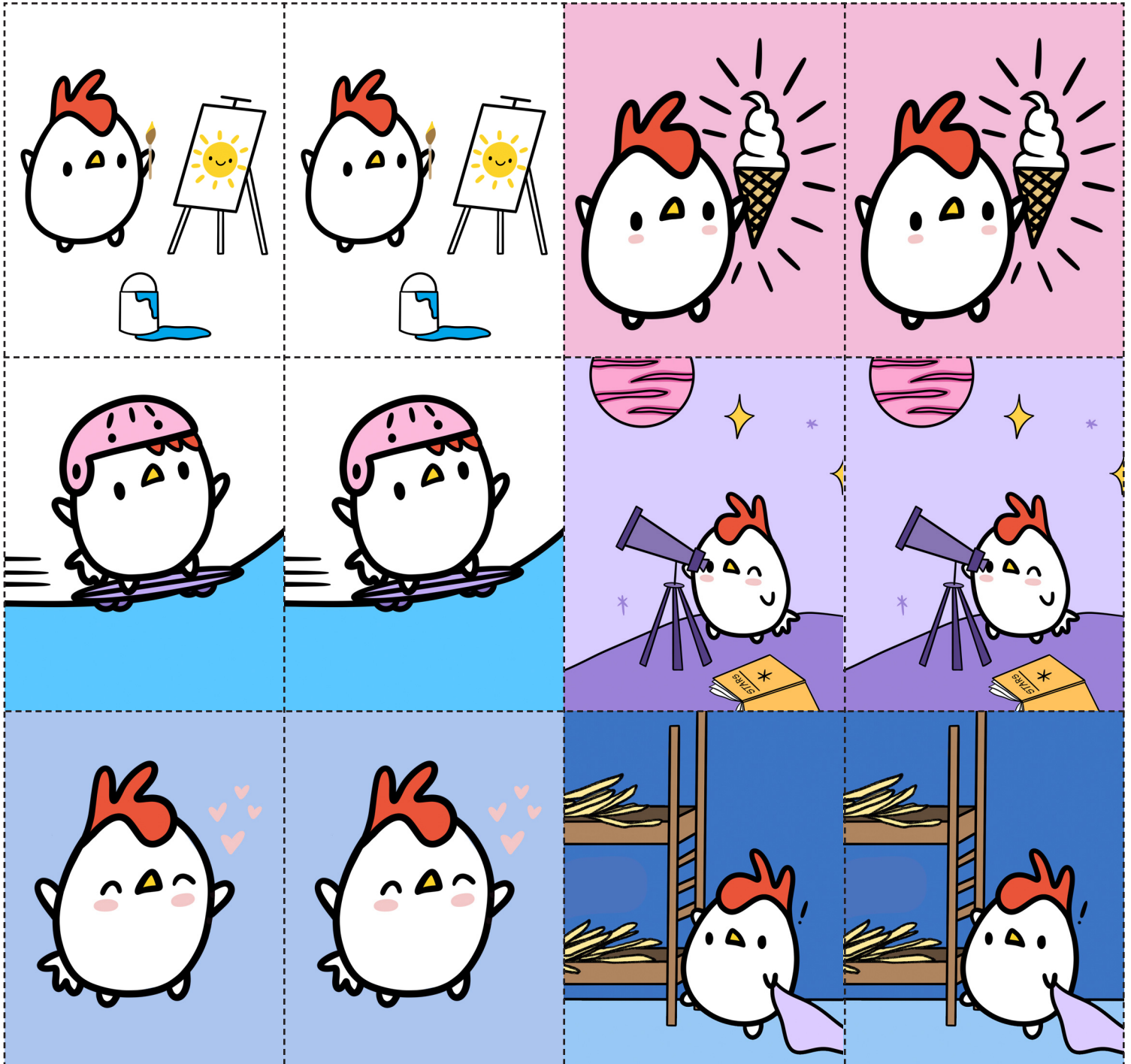


CON POLLO MATCHING GAME

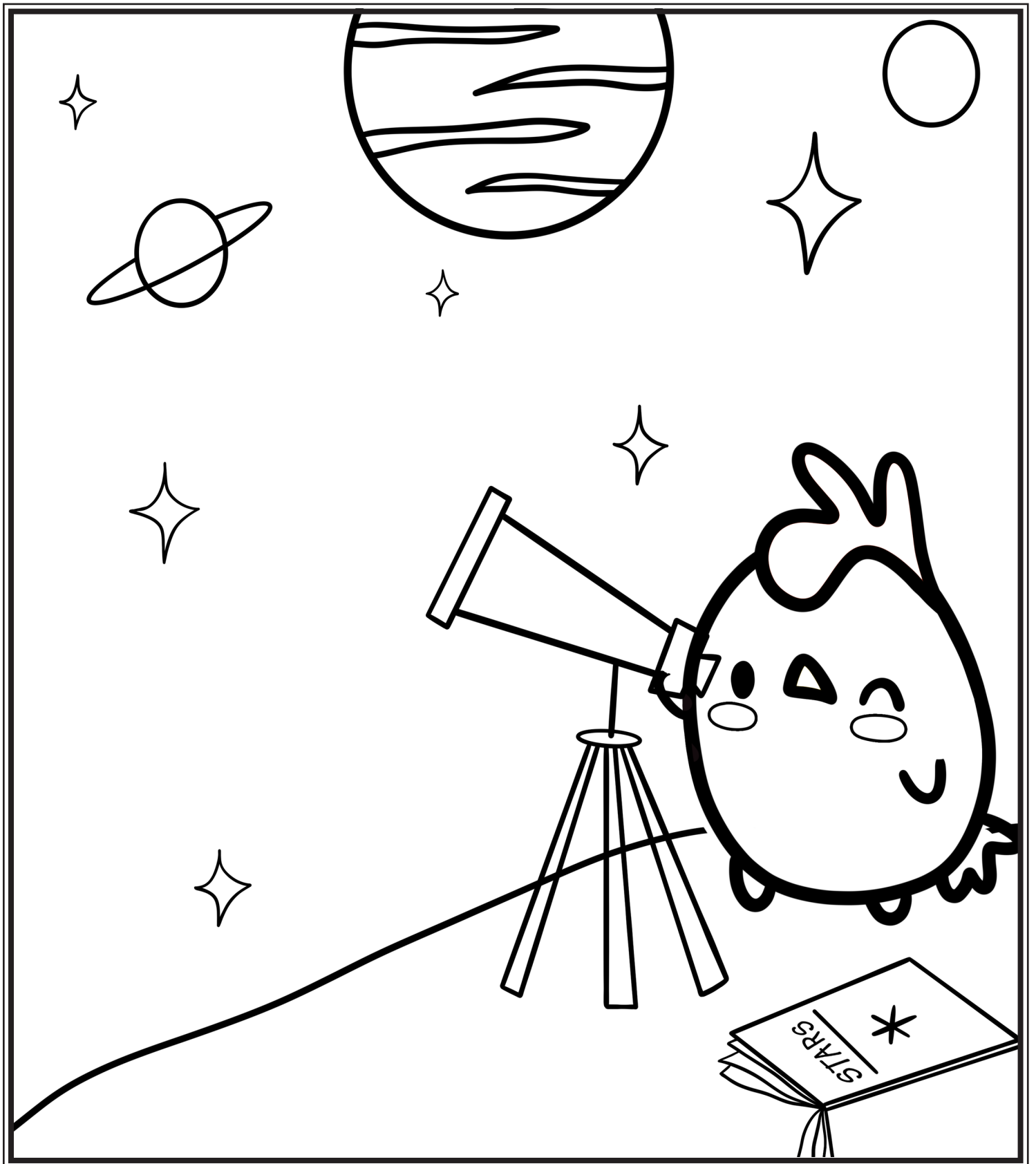
To play, have a grown-up help cut out all of the cards, mix them up, and lay them facedown.

Taking turns, a player flips over two cards. If the cards match, it's a pair!

Keep those cards. If they don't match, turn them back over, mix the cards again, and the next player gets a turn. When all the pairs have been found, the player with the most cards wins!



CON POLLO COLORING PAGE



CON POLLO COLORING PAGE

